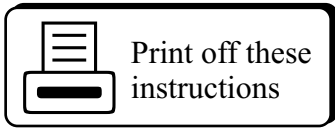


HOW TO UPLOAD A LOGO OR A SCANNED SIGNATURE



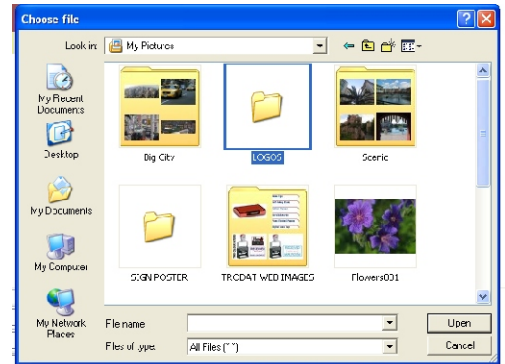
STEP ONE:

Select the stamp you require. Click on the BROWSE button to start the process of uploading your logo.



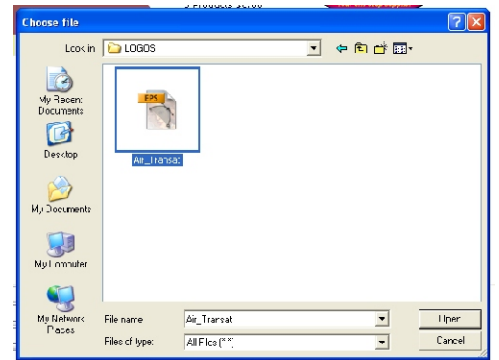
STEP TWO:

A screen from your computer will automatically pop up. This screen allows you to search your computer for files to upload. Click on the folder where your logo is located on your computer.



STEP THREE:

Select the file or scanned image you want to upload to the site. If scanning a signature or logo, scan at the highest resolution you can, also only scan the image only not the entire page. You can upload any one of the following formats: BMP, GIF and JPEG.



STEP FOUR

Fill in the IMAGE JUST section (left, right, top, bottom and background). Background is used for digital name tags only. Fill in the custom wording for your stamp. Click on the preview button to upload the logo and create your image of your custom stamp. You end edit any of the information and click on the preview button to review the image until you have completed your design. Once completed, click on the add to cart button and continue through the check out process.

